

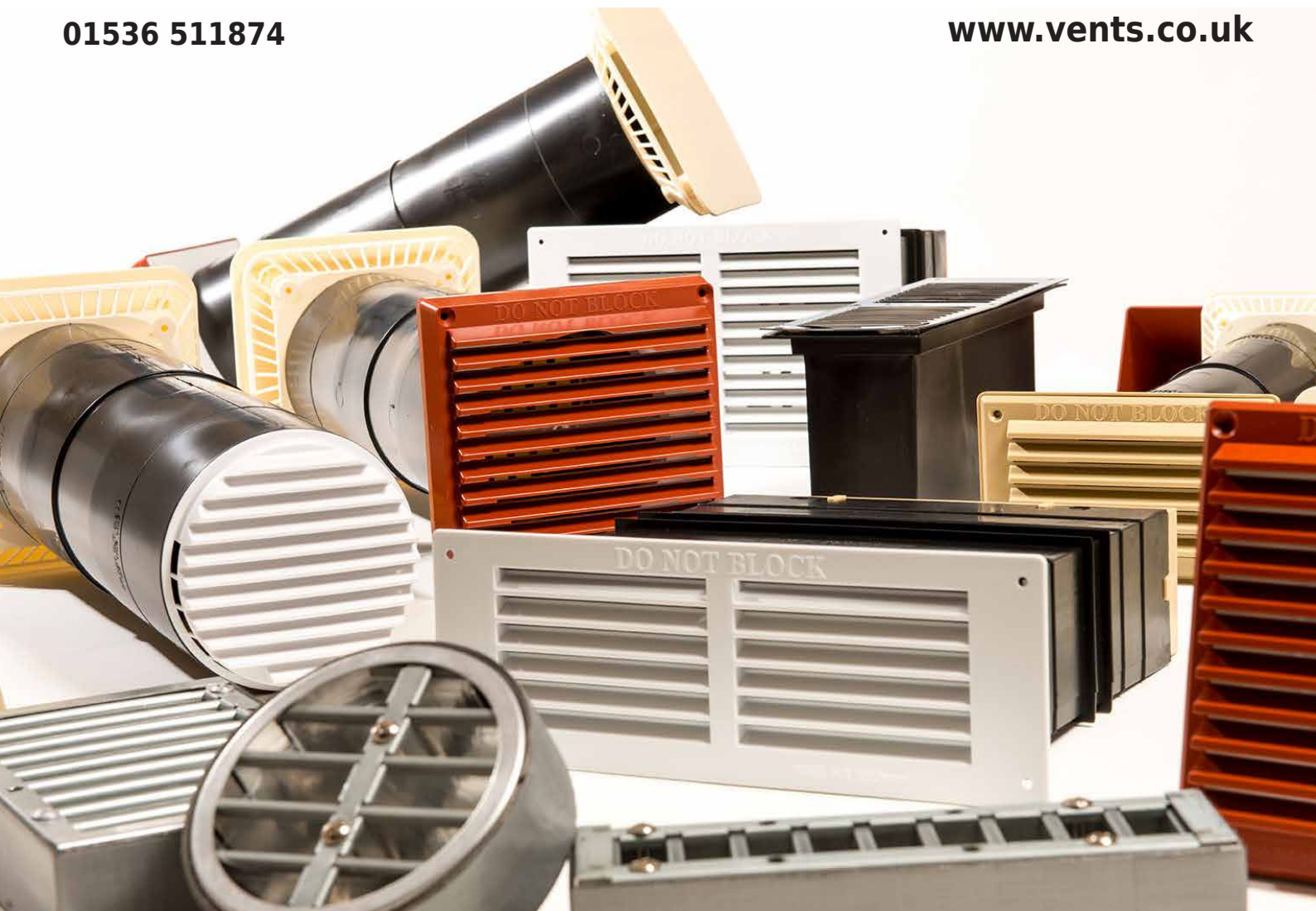
April 2015

RYTONS
www.vents.co.uk
INNOVATION IN VENTILATION
Naturally

Rytons Boiler, Stove & Fire Ventilators

01536 511874

www.vents.co.uk



Contents

Product Name	Product Code	Equivalent Area	Sound Reduction dB $D_{n,e,w}$	Page
Rytons 3" Mini LookRyt® AirCore®	AC3LP	3,168mm ²	Unsilenced	6
Rytons 5" Super Acoustic LookRyt® AirCore®	AAC125LP	7,400mm ²	44 dB	8
Rytons 5" Cowled Super Acoustic LookRyt® AirCore®	AAC125LPCWL	7,200mm ²	45 dB	8
Rytons 5" High Rise Super Acoustic LookRyt® AirCore®	AAH125LP	6,600mm ²	44 dB	8
Rytons 5" LookRyt® AirCore®	AC10LP	10,400mm ²	Unsilenced	8
Rytons 5" Cowled LookRyt® AirCore®	AC10LPCWL	11,100mm ²	Unsilenced	8
Rytons 5" Baffled LookRyt® AirCore®	AC7LP	7,900mm ²	Unsilenced	8
Rytons 5" Cowled Baffled LookRyt® AirCore®	AC7LPCWL	8,100mm ²	Unsilenced	8
Rytons 5" High Rise LookRyt® AirCore®	ACH75LP	6,800mm ²	Unsilenced	8
Rytons '9x3' Acoustic AirLiner® Set with Flush Louvre	TAL4SET	5,800mm ²	38 dB	11
Rytons '9x3' Cowled Acoustic AirLiner® Set with Flush Louvre	TAL4CWL	5,800mm ²	39 dB	11
Rytons '9x3' Ventilation Set with Flush Louvre	TCL8	9,400mm ²	Unsilenced	11
Rytons '9x3' Cowled Ventilation Set with Flush Louvre	TCL8CWL	9,100mm ²	Unsilenced	11
Rytons '9x6' Acoustic AirLiner® Set with Flush Louvre	TALSET	6,300mm ²	39 dB	12
Rytons '9x6' Cowled Acoustic AirLiner® Set with Flush Louvre	TALCWL	5,500mm ²	42 dB	12
Rytons '9x6' Ventilation Set with Flush Louvre	TCL18	17,500mm ²	Unsilenced	12
Rytons '9x6' Cowled Ventilation Set with Flush Louvre	TCL18CWL	17,200mm ²	Unsilenced	12
Rytons '9x9' Acoustic AirLiner® Set with Louvre	TAL9SET	13,100mm ²	38 dB	13
Rytons '9x9' Cowled Acoustic AirLiner® Set with Louvre	TAL9CWL	12,200mm ²	40 dB	13
Rytons '9x9' Ventilation Set with Louvre	TCL20	26,500mm ²	Unsilenced	13
Rytons '9x9' Cowled Ventilation Set with Louvre	TCL20CWL	24,000mm ²	Unsilenced	13
Rytons Direct Ventilation Kits	Various	N/A	N/A	14
Rytons Floor Ventilators	FV10	* 11,000mm ²	N/A	15
Rytons Intumescent RytBlocks	Various	Various	N/A	15

* Free Area



General Guidance

A brief definition of some of the terminology used in this guide.

A **combustion appliance** (or **appliance**) is typically a boiler, warm air heater, fire, stove or cooker which burns fuel to generate heat for the home or for cooking purposes. These appliances require adequate ventilation to ensure safe combustion and efficient operation.

A $D_{n,e,w}$ **sound reduction figure** reflects testing at every frequency and it is the only result recommended by the BRE for products such as vents. As there is no industry standard for presenting acoustic test results, beware of unspecified dB figures which can simply be the highest dB achieved at an individual frequency bearing no relation to the type of noise you are aiming to reduce. Only a $D_{n,e,w}$ figure gives you peace of mind that the result reflects the true performance of the product.

Equivalent area is the required air flow calculation measurement for combustion appliance ventilators. This robust measurement should be carried out to the method contained in BS EN 13141-1:2004, usually by an independent testing authority.

A **flue draught stabiliser** is an apparatus fitted within the chimney to reduce negative draughts.

A **flueless appliance** is designed not to be connected to a flue. Its combustion gases mix with the air in the room and are dispersed with air exchange.

Free area is a simple geometric calculation of air flow which is achieved by measuring the smallest apertures of a grille or vent. This method of calculating air flow is deemed unreliable for modern combustion air vents which often have cowls and complex draught reducing systems.

HETAS is the official body for approving solid fuel domestic heating appliances. Rytons ventilators are the only products on the market with HETAS approval and the only ventilators recommended by HETAS to their registered engineers.

An **open-flued appliance** draws its combustion air from the room or space into which it is installed. A flue is required to discharge its products of combustion to the outside.

A **room-sealed appliance** has an air in/fumes out combustion system completely sealed from the room into which it is installed.

No part of this publication may be reproduced or transmitted in any form or by any means, electronic or mechanical, including photocopying, recording or information storage or retrieval system, without either the prior permission in writing from the publisher or a licence, permitting restricted copying. Architects or similar are permitted to reproduce appropriate illustrations on plans and documents only.

All Rytons products are neither hazardous to health nor harmful to the environment when used correctly. Rytons reserve the right to improve specifications from time to time without prior notice. All information is given in good faith and to the best of our knowledge is true and accurate. Since delivery dates, the use of products and control of the labour involved is outside our control, no warranty is given nor should Rytons representatives or agents imply any warranty. Customers should also satisfy themselves that the products are suitable for the intended purpose.

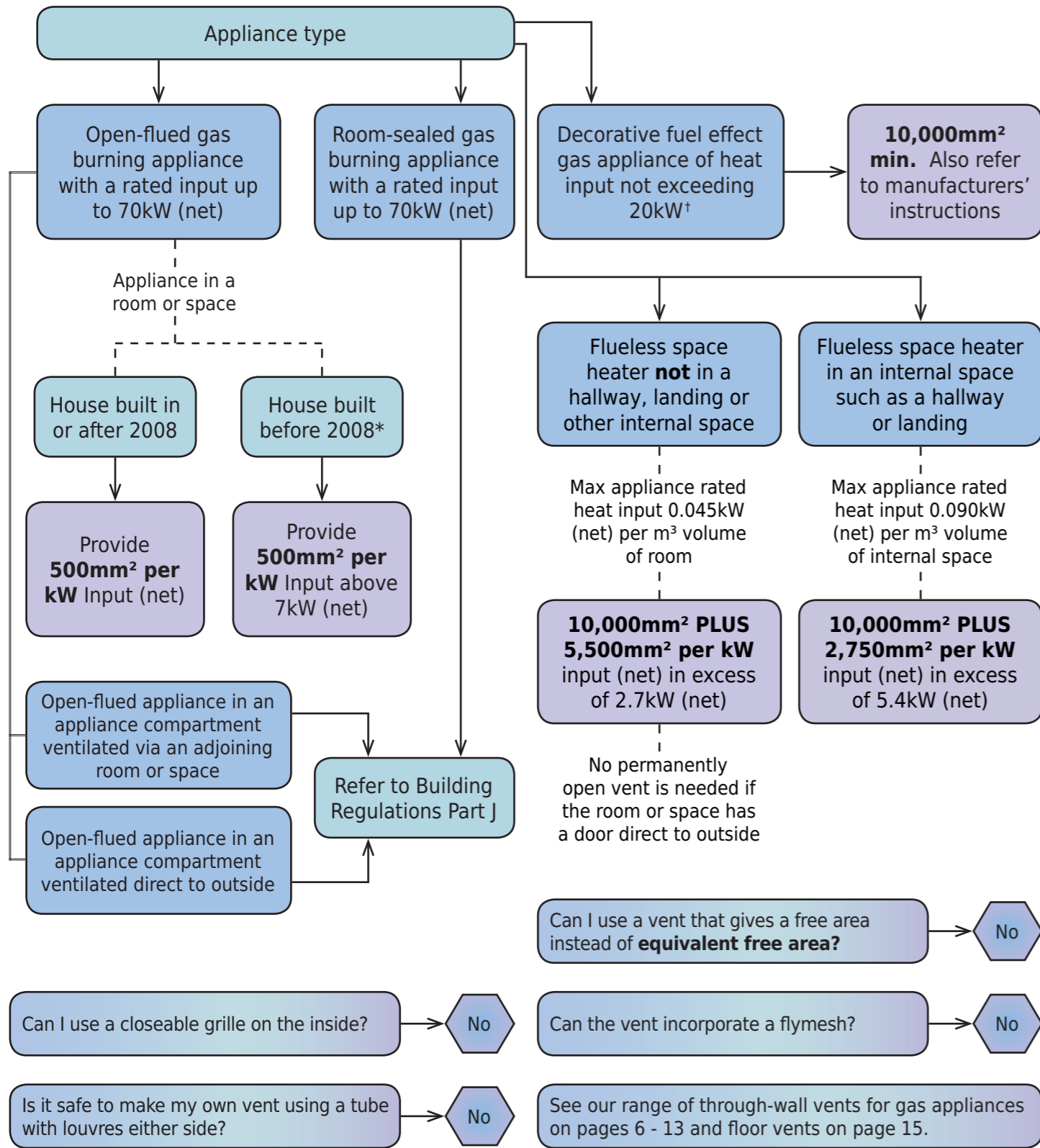
Calls to and from Rytons are recorded to help us maintain and improve our service.

Rytons products are protected under section 213 of the Copyright, Designs and Patents Act 1988. ® Registered Trademark of Rytons Building Products Ltd. All trademarks and trade names used in this brochure are the property of Rytons Building Products Ltd. Copyright © Rytons Building Products Ltd 2015.

Any communication regarding the above should be directed to Rytons Building Products Ltd, Design House, Kettering Business Park, Kettering, NN15 6NL.

A step by step guide to calculating the ventilation requirements of gas appliances

Quick reference extracts from the Building Regulations Part J.
For detailed guidance with examples please refer to the full document.

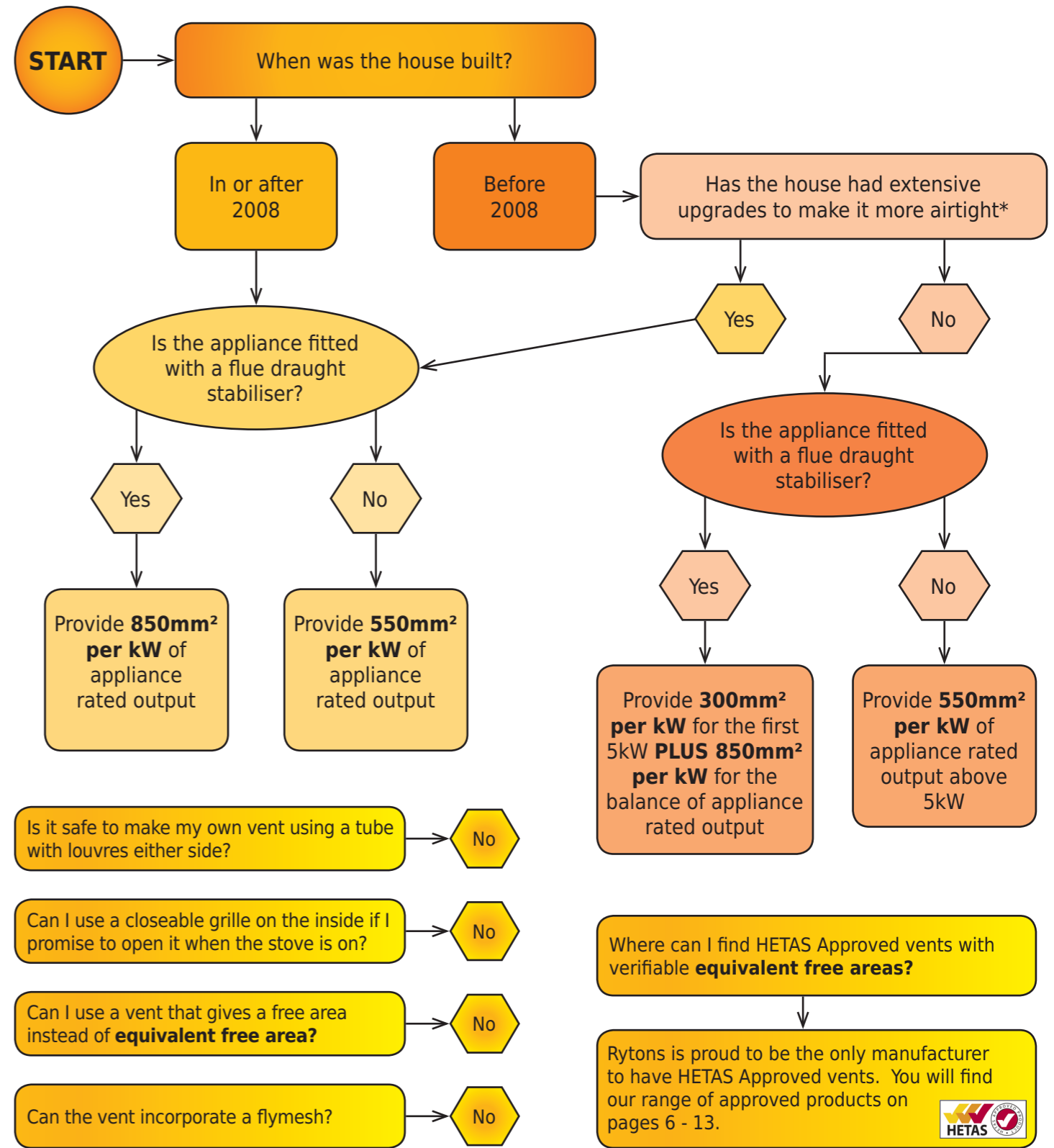


* If the house has been extensively upgraded for increased airtightness provide 500mm² per kW Input (net). Refer to Appendix F of the Building Regulations Part J for measures that constitute significantly improving airtightness.

† BS 5871-3:2005


A step by step guide to calculating the ventilation requirements of solid fuel appliances

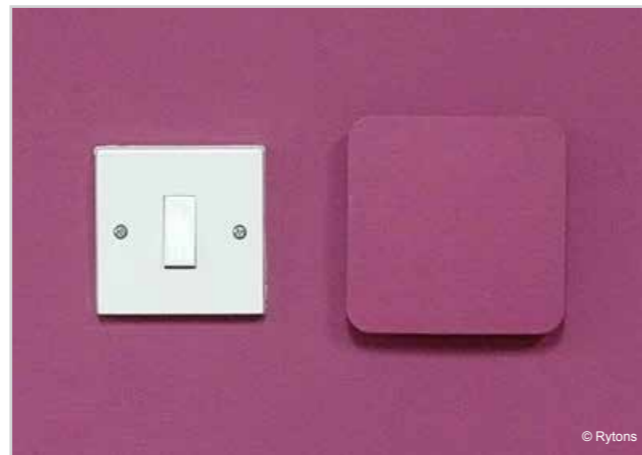
Extracts from the Building Regulations Part J. Information applies only to stoves, cookers and boilers burning solid fuel (including solid biofuel) with a rated output up to 50kW.



* Refer to Appendix F of the Building Regulations Part J for measures that constitute significantly improving airtightness.

Rytons Mini LookRyt® AirCore®

- 3" dia. retro-fitted core ventilator for the provision of combustion air to low kilowatt stoves and fires.
- Mini internal LookRyt® panel size barely bigger than a light switch for a discreet appearance in the room.
- Draught reducing LookRyt® panel design disperses air evenly for maximum comfort.
- Paint or wallpaper the LookRyt® panel to match room décor for an appearance that's virtually unnoticeable.
- HETAS approved for use with solid fuel appliances. 
- Installed in a hole drilled using a 78mm dia. core drill widely available from trade tool suppliers.
- External water baffle prevents transfer of water across the cavity.
- External louvre grille U.V. stabilised to slow down the effects of sunlight.
- Screws provided to secure the internal panel.
- Verifiable equivalent area independently tested by the BRE to BS EN 13141-1:2004.



Size Guide

External Louvre:	158mm L x 98mm H
Tube:	77mm Dia. x 358mm L
Mini LookRyt®:	110mm L x 110mm H

Colour Guide

External Louvre:	Terracotta, buff/sand, white
Mini LookRyt®:	Magnolia (may be decorated)

Code	Noise Reduction	External Finish	Tube Lining	Equivalent Area
Rytons AC3LP	Unsilenced	Mini Louvre	-	3,168mm ²


Rytons Mini LookRyt® AirCore® (AC3LP) - Stove Output Compatibility Chart

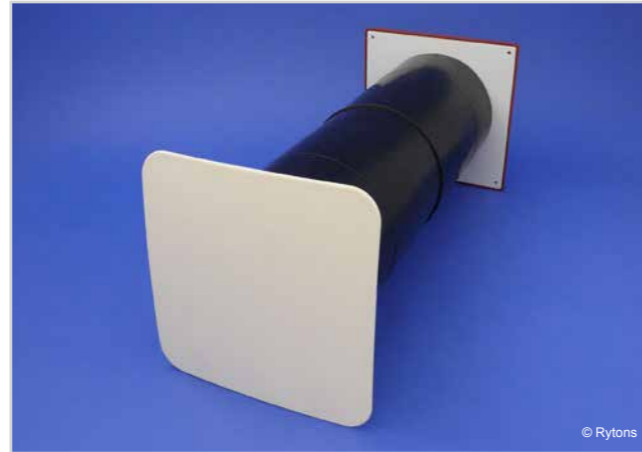
	Stove without flue draught stabiliser	Stove with flue draught stabiliser
House built prior to 2008*	Up to 10kW (2,750mm ² requirement)	Up to 6kW (2,350mm ² requirement)
House built in or after 2008	Up to 5kW (2,750mm ² requirement)	Up to 3kW (2,550mm ² requirement)

* If the house has been extensively upgraded for increased airtightness use post 2008 calculations. Refer to Appendix F of the Building Regulations Part J for measures that constitute significantly improving airtightness.



Rytons LookRyt® AirCore® Ventilators

- 5" dia. retro-fitted core ventilators for the provision of combustion air to boilers, stoves and fires.
- Acoustic options available to reduce noise transfer for a more peaceful environment.
- All sets include a draught reducing LookRyt® panel which disperses air evenly for maximum comfort.
- Paint or wallpaper the LookRyt® panel to match room décor for a discreet appearance.
- HETAS approved for use with solid fuel appliances. 
- High rise options available fitted from the inside for high level installations.
- External water baffle prevents transfer of water across the cavity.
- External louvre grille and optional cowl U.V. stabilised to slow down the effects of sunlight.
- Screws provided to secure the internal panel.
- Equivalent areas tested to BS EN 13141-1:2004 and independently verified by the BRE.
- Acoustic performance tests by BRE Acoustics.



Size Guide

Optional Cowl:	217mm L x 210mm H x 93mm D
External Louvre:	166mm L x 160mm H
Tube:	127mm Dia. x 358mm L
LookRyt® Panel:	172mm L x 172mm H

Colour Guide

Optional Cowl:	Terracotta, buff/sand, white
External Louvre:	Terracotta, buff/sand, white
LookRyt® Panel:	Magnolia (may be decorated)

Think about an acoustic option ...


“ It is a common experience that noise is unpleasant and affects the quality of life. ”

World Health Organization

Code	Noise Reduction	External Finish	Tube Lining	Equivalent Area
Rytons AAC125LP	44 dB $D_{n,e,w}$	Louvre	Acoustic	7,400mm ²
Rytons AAC125LPCWL	45 dB $D_{n,e,w}$	Louvre & Cowl	Acoustic	7,200mm ²
Rytons AAH125LP	44 dB $D_{n,e,w}$	High Rise Louvre	Acoustic	6,600mm ²
Rytons AC10LP	Unsilenced	Louvre	-	10,400mm ²
Rytons AC10LPCWL	Unsilenced	Louvre & Cowl	-	11,100mm ²
Rytons AC7LP	Unsilenced	Louvre	Baffles	7,900mm ²
Rytons AC7LPCWL	Unsilenced	Louvre & Cowl	Baffles	8,100mm ²
Rytons ACH75LP	Unsilenced	High Rise Louvre	Baffles	6,800mm ²



Rytons Ventilation Sets '9x3'

- Single brick through-wall ventilation set for the provision of combustion air to boilers, stoves and fires.
- Acoustic options available to reduce noise transfer for a more peaceful environment.
- HETAS approved for use with solid fuel appliances. 
- Multifix® Air Brick available in a choice of colours to complement external brickwork.
- External water baffles prevent transfer of water across the cavity.
- Internal and external grilles U.V. stabilised to slow down the effects of sunlight.
- Finished with a fixed open flush fitting louvre grille for a neat internal appearance.
- Telescopic cavity liner contains an internal baffle to reduce the transmission of light and draughts.
- Equivalent areas tested to BS EN 13141-1:2004 and independently verified by the BRE.
- Acoustic performance tests by BRE Acoustics.
- Independently approved by the BBA for quality and performance. 



Size Guide

Optional Cowl:	255mm L x 96mm H x 44mm D
AirLiner®:	Extends from 250mm-368mm L with air brick fitted
Internal Louvre:	270mm L x 97mm H

Colour Guide

Optional Cowl:	Terracotta, buff/sand
Air Brick:	Terracotta, buff/sand, white, grey, blue/black, black, brown
Internal Louvre:	White



Think about an acoustic option ...

“ One in three individuals is annoyed during the daytime and one in five has disturbed sleep at night because of traffic noise. ”

World Health Organization

Code	Noise Reduction	External Finish	Sleeve Lining	Equivalent Area
Rytons TAL4SET	38 dB $D_{n,e,w}$	Air Brick	Baffle & Acoustic	5,800mm ²
Rytons TAL4CWL	39 dB $D_{n,e,w}$	Air Brick & Cowl	Baffle & Acoustic	5,800mm ²
Rytons TCL8	Unsilenced	Air Brick	Baffle	9,400mm ²
Rytons TCL8CWL	Unsilenced	Air Brick & Cowl	Baffle	9,100mm ²

Rytons Ventilation Sets '9x6'

- Double brick through-wall ventilation sets for the provision of combustion air to boilers, stoves and fires.
- Acoustic options available to reduce noise transfer for a more peaceful environment.
- HETAS approved for use with solid fuel appliances. 
- Multifix® Air Bricks available in a choice of colours to complement external brickwork.
- External water baffles prevent transfer of water across the cavity.
- Internal and external grilles U.V. stabilised to slow down the effects of sunlight.
- Finished with a fixed open flush fitting louvre grille for a neat internal appearance.
- Telescopic cavity liner contains a system of internal baffles to reduce the transmission of light and draughts.
- Equivalent areas tested to BS EN 13141-1:2004 and independently verified by the BRE.
- Acoustic performance tests by BRE Acoustics.
- Independently approved by the BBA for quality and performance. 



Size Guide

Optional Cowl:	255mm L x 154mm H x 74mm D
AirLiner®:	Extends from 250mm-404mm L with air bricks fitted
Internal Louvre:	264mm L x 166mm H

Colour Guide



Optional Cowl:	Terracotta, buff/sand, white
Air Brick:	Terracotta, buff/sand, white, grey, blue/black, black, brown
Internal Louvre:	White

Think about an acoustic option ...

“ Both road traffic noise and aircraft noise increase the risk of high blood pressure. ”
World Health Organization

Code	Noise Reduction	External Finish	Sleeve Lining	Equivalent Area
Rytons TALSET	39 dB $D_{n,e,w}$	Air Bricks	Baffles & Acoustic	6,300mm ²
Rytons TALCWL	42 dB $D_{n,e,w}$	Air Bricks & Cowl	Baffles & Acoustic	5,500mm ²
Rytons TCL18	Unsilenced	Air Bricks	Baffles	17,500mm ²
Rytons TCL18CWL	Unsilenced	Air Bricks & Cowl	Baffles	17,200mm ²

Rytons Ventilation Sets '9x9'

- Triple brick through-wall ventilation sets for the provision of combustion air to boilers, stoves and fires.
- Acoustic options available to reduce noise transfer for a more peaceful environment.
- HETAS approved for use with solid fuel appliances. 
- Multifix® Air Bricks available in a choice of colours to complement external brickwork.
- External water baffles prevent transfer of water across the cavity.
- Internal and external grilles U.V. stabilised to slow down the effects of sunlight.
- Finished with a fixed open louvre grille internally.
- Telescopic cavity liner contains a system of internal baffles to reduce the transmission of light and draughts.
- Equivalent areas tested to BS EN 13141-1:2004 and independently verified by the BRE.
- Acoustic performance tests by BRE Acoustics.
- Independently approved by the BBA for quality and performance. 



Size Guide

Optional Cowl:	274mm L x 235mm H x 103mm D
AirLiner®:	Extends from 250mm-404mm L with air bricks fitted
Internal Louvre:	271mm L x 247mm H

Colour Guide

Optional Cowl:	Terracotta, buff/sand, white
Air Brick:	Terracotta, buff/sand, white, grey, blue/black, black, brown
Internal Louvre:	White

Think about an acoustic option ...

“ Road traffic noise has been shown to increase the risk of ischaemic heart disease. ”
World Health Organization

Code	Noise Reduction	External Finish	Sleeve Lining	Equivalent Area
Rytons TAL9SET	38 dB $D_{n,e,w}$	Air Bricks	Baffles & Acoustic	13,100mm ²
Rytons TAL9CWL	40 dB $D_{n,e,w}$	Air Bricks & Cowl	Baffles & Acoustic	12,200mm ²
Rytons TCL20	Unsilenced	Air Bricks	Baffles	26,500mm ²
Rytons TCL20CWL	Unsilenced	Air Bricks & Cowl	Baffles	24,000mm ²

Rytons Direct Ventilation Kits

- Direct ventilation kits for the provision of combustion air to stoves fitted with an attachment for an external air supply.
- Wide range of kits available from stock plus bespoke kits made to order.
- Note: Direct ventilation is not suitable for all stoves. Always refer to the stove manufacturer's instructions regarding venting requirements.
- Currently, Part J of the Building Regulations and HETAS guidelines still require the use of through-wall ventilation when using direct ventilation.



Create your perfect kit

1) Choose your semi-rigid aluminium ducting

100mm Dia. x 1.5m L
(3m lengths available to order)

125mm Dia. x 1.5m L
(3m lengths available to order)

150mm Dia. x 1.5m L
(3m lengths available to order)

Special orders also taken for any diameter between 63mm and 500mm.

2) Choose an external grille

Plastic Louvre Grille
Available in a range of colours
For 100mm, 125mm and 150mm dia. ducting

Stainless Steel Cowled Grille
For 100mm, 125mm and 150mm dia. ducting

Stainless Steel Meshed Grille
For 100mm, 125mm and 150mm dia. ducting

Frequently Asked Questions

What is the operating temperature of the semi-rigid ducting?

Up to 300°C.

What is the longest length of semi-rigid ducting available?

3m to order. Connectors available.

How long can a venting run be?

Keep the run as short as possible and consider fire breaks through multiple rooms.

Can ducting include bends?

Keep the run as straight as possible and check with your stove manufacturer.

Rytons Floor Ventilator

- Room ventilator utilising air from a ventilated sub-floor void.
- Available with a mirror polished solid brass or chromed louvre grille for a stylish appearance.
- Inverted louvres provide a neat flush finish.
- Fixing screws included.
- Independently approved by the BBA for quality and performance.



Size Guide

267mm L x 95mm H x 125mm D

Code	Free Area
Rytons FV10BRASS	11,000mm ²
Rytons FV10CHROME	11,000mm ²

Rytons Intumescent RytBlocks

- Heavy duty intumescent grilles for walls and ducts.
- In the event of a fire slats fuse together and seal within 2 minutes.
- Gives 3 hours protection preventing the passage of smoke and gases.
- Temperature increase insulated for 22 minutes.
- ACFIRE125 compatible with our 125mm Dia. AirCore[®] sets.
- TL8FIRE compatible with our '9x3' AirLiner[®] Sets.
- TL18FIRE compatible with our '9x6' AirLiner[®] Sets.



Size Guide

ACFIRE125:	118mm Dia. x 43mm D
TL8FIRE:	206mm L x 58mm H x 44mm D
TL18FIRE:	206mm L x 124mm H x 44mm D

Code	Free Area
Rytons ACFIRE125	5,150mm ²
Rytons TL8FIRE	5,330mm ²
Rytons TL18FIRE	13,390mm ²

Product Guides & Services

As a UK manufacturer since 1972, we use all our expertise and experience to bring you outstanding product ranges and a service you can rely on.

View our product ranges, product guides and videos at www.vents.co.uk

- Boiler, Stove & Fire Ventilators (including Acoustic)
- Background Room Ventilators (including Acoustic)
- Louvre and Hit & Miss Ventilators
- Cavity Weeps, Slim Vents® & Air Bricks
- Roof Ventilators
- RytDuct® and RytHose (Rigid and Flexible Ducting)
- DamRyt® Flood Protection Range



FREE Delivery

Free delivery is available on orders of just **£50 nett** to any address on the UK mainland (including sites).

Next Day Delivery

Orders confirmed before 3pm are dispatched the same day with over 99% delivered **next working day** at no extra charge. Orders to Northern Ireland and the Republic of Ireland are normally delivered in 2-3 working days.

Here to Help

Call us on **01536 511874** or email admin@rytons.com with your quotes, questions or queries. Our offices are open 8:30am - 5:00pm weekdays and we are always happy to help.

Contact Us

Rytons Building Products Ltd
Design House
Kettering Business Park
Kettering
NN15 6NL

T: 01536 511874
F: 01536 310455
E: admin@rytons.com
www.vents.co.uk

